

Company Profile



Head Office and Factory : 84, Hwajeonsandan 2-ro,
Gangser-gu, Busan, Korea

TEL : +82 51-971-9950 FAX : +82 51-971-9951 E-mail : kfp@kfp.kr





Contents

1. Company Overview
2. Organization
3. Business Reference
4. Certificate
5. Product Categories
6. Facilities

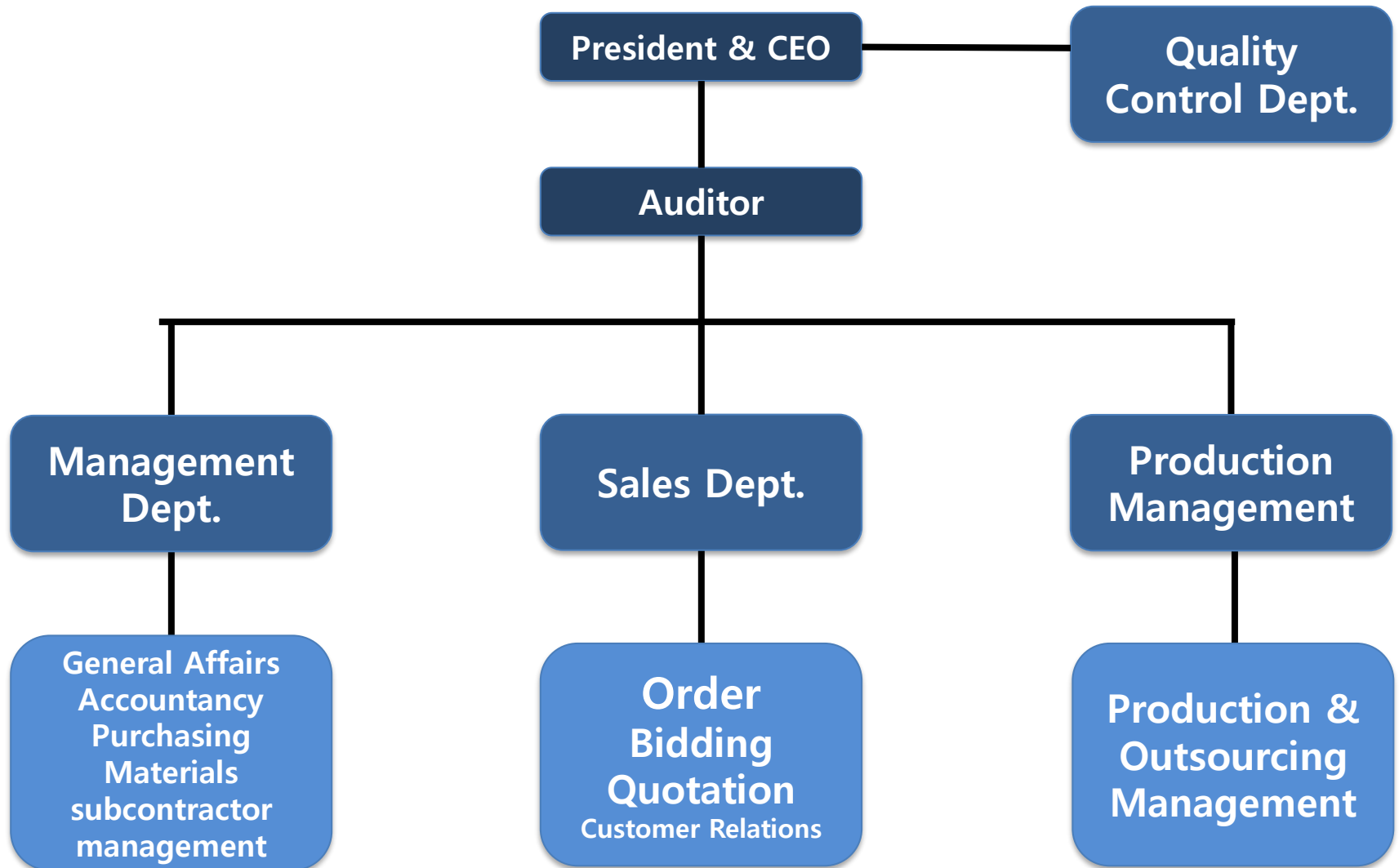


Company Overview

Name of Company	KFP CO, LTD.	Business registration number	623-86-00336	Name of Representative	JANG CHUN WOO	
Date of Business Commencement	2016-03-01	Land Square Measure	1653m ²	Building	1335m ²	
Business Type	Manufacturing	Products	Standard and Non-standard Flange, Forged Nozzle, Tube Sheet, Forged Nozzle and Shell			
Company Info	Headquarters	84, Hwajeonsandan 2-ro, Gangser-gu, Busan, Korea			Tel.	+82 51-970-9950
	Personnel	Executive	Office	MFC Engineer	Total	Remarks
		3	6	9	18	
Business Area	Plant / Shipbuilding / Petrochemistry / Nuclear & Thermoelectric Power Plant					



Organization





3. Business Reference

NO	PROJECT	YEAR	COUNTRY	SIZE RANGE	MATERIAL	PRODUCT
1	UOP MEROX PJT	2020	MEXICO	OD1500~OD2800	CS STEEL STS STEEL	TUBE SHEET
2	UOP MEROX PJT	2020	MEXICO	1/2"~24"	CS STEEL STS STEEL	STANDARD FLANGE
3	UOP MEROX PJT	2020	MEXICO	1/2"~24"	CS STEEL STS STEEL	LWN BOSS
4	UOP PEMEX CCR PJT	2020	MEXICO	OD200~OD3200	CS STEEL STS STEEL	TUBE SHEET
5	UOP PEMEX CCR PJT	2020	MEXICO	1"~24"	CS STEEL STS STEEL	STD FLANG NOZZLE
6	BORGIS KAFIN PJT	2020	GERMANY	16"~24" OD180~OD540	ALLOY STEEL	STD FLANGE NOZZLE
7	KSL MOZAMBIQUE LNG	2020	MOZAM- BIQUE	OD320~OD350	STS STEEL	HEAD PLATE STD FLANGE
8	NIKKISO LNG	2020	USA	OD560-2200 2"~5"	STS STEEL	HEAD PLATE NOZZLE STD FLANGE
9	ARAMCO COGEN	2020	SAUDI	2"~24"	ALLOY STEEL	STANDARD FLANGE
10	HYUNDAI ENGINEERING EGAT PJT	2020	KOREA	3"~24" OD25~OD440	CS STEEL STS STEEL	STD FLANG NOZZLE



3. Business Reference

NO	PROJECT	YEAR	COUNTRY	SIZE RANGE	MATERIAL	PRODUCT
11	KOBELCO DSME 2481, 2482, 2483	2019	KOREA	1/2"~24"	CS STEEL STS STEEL	STANDARD FLANGE
12	ADNOC CFP WTP	2019	UAE	OD240~OD450	CS STEEL STS STEEL	STANDARD FLANGE, TUBE SHEET
13	LGC Y2C DRUM	2019	KOREA	OD360~OD480	CS STEEL	FORGED NOZZLE
14	HUSKY PRJ	2019	USA	1"~24"	CS STEEL STS STEEL	FN FYPE FLANGE
15	SITRA PRJ	2019	BAHRAIN	4"~36"	CS STEEL	STANDARD FLANGE
16	JACKSON PRJ	2019	USA	OD180~OD540	CS STEEL STS STEEL	FORGED NOZZLE
17	LAYYAH PRJ	2019	UAE	OD320~OD350	ALLOY STEEL	FORGED NOZZLE
18	VOST POWER POSSUM POINT PRJ	2019	USA	OD260~OD560	ALLOY STEEL	FORGED NOZZLE
19	DAEJOO MACHINERY R PRJ	2019	KOREA	OD540	CS STEEL	TUBE SHEET
20	DAEJOO MACHINERY R PRJ	2019	KOREA	OD190~OD345	SB171-C63000	TUBE SHEET



3. Business Reference

NO	PROJECT	YEAR	COUNTRY	SIZE RANGE	MATERIAL	PRODUCT
21	JEJU Complex Power Plant	2018	KOREA	1/2"~18"	CS STEEL STS STEEL	FLANGE, NOZZLE FLANGE, BOSS
22	DSME PTJ LR/ABS	2018	KOREA	1/2"~1"	STS STEEL	FLANGE, NOZZLE FLANGE, BOSS
23	KGS LNG TANK	2018	KOREA	1/2"~18"	CS STEEL STS STEEL	FLANGE, FOREGED PIPE
24	LG CHEMICAL	2018	KOREA	15A~600A	CS STEEL STS STEEL	FLANGE, TUBE SHEET
25	HYUNDAI HEAVY INDUSTRY	2018	KOREA	1/2"~24"	CS STEEL STS STEEL	FLANGE, NOZZLE FLANGE
26	SB623 AIR RESERVOIR	2018	KOREA	1/2"~24"	CS STEEL STS STEEL	FLANGE, NOZZLE FLANGE
27	STX 500TON 1~8 AIR RESERVOIR	2018	KOREA	1/2"~24"	CS STEEL STS STEEL	FLANGE, NOZZLE FLANGE
28	KGS	2018	KOREA	1"~8"	STS STEEL	FLANGE, NOZZLE FLANGE
29	JORD C7031	2018	AUSTRALIA	1/2"~24"	CS STEEL STS STEEL	FLANGE, NOZZLE FLANGE, TUBE SHEET
30	SAMSUNG HEAVY INDUSTRY BIO SYSTEM	2018	KOREA	15A~600A	CS STEEL STS STEEL	FLANGE, NOZZLE FLANGE, TUBE SHEET
31	KUWAIT CFP PJT	2018	KUWAIT	1/2"~24"	CS STEEL STS STEEL	FLANGE, NOZZLE FLANGE, TUBE SHEET



3. Business Reference

NO	PROJECT	YEAR	COUNTRY	SIZE RANGE	MATERIAL	PRODUCT
32	MHPS KURE – TANJUNG JATI B UNIT #5, #6	2017	KOREA	1/2"~24"	CS STEEL STS STEEL	FLANGE, NOZZLE FLANGE, BOSS
33	DEALIM – IRAN BAFGH FABRICATED PIPING	2017	KOREA	1/2"~24"	CS STEEL STS STEEL	FLANGE, NOZZLE FLANGE, BOSS
34	DSME- JIJEL & BISKRA	2017	KOREA	1/2"~24"	CS STEEL STS STEEL	FLANGE, NOZZLE FLANGE, BOSS
35	DSME 7047 RADAR MAST	2017	KOREA	1/2"~6"	CS STEEL STS STEEL	FLANGE, NOZZLE FLANGE, BOSS
36	SHI 2153/54 PUMP TOWER	2017	KOREA	1/2"~6"	CS STEEL STS STEEL	FLANGE, NOZZLE FLANGE, BOSS
37	DSME 2462 RADAR MAST	2017	KOREA	1/2"~6"	CS STEEL STS STEEL	FLANGE, NOZZLE FLANGE, BOSS
38	SCF SOVOCOMFLOT LNG CARRIER	2017	KOREA	1/2"~6"	CS STEEL STS STEEL	FLANGE, NOZZLE FLANGE, BOSS
39	INPEX ICHTHYS FPSO PROJECT	2017	KOREA	1/2"~6"	CS STEEL STS STEEL	FLANGE, NOZZLE FLANGE, BOSS
40	Shell PRELUDE F-LNG PROJECT	2017	KOREA	1/2"~6"	CS STEEL STS STEEL	FLANGE, NOZZLE FLANGE, BOSS
41	JIJEL DAEWOO INTERNATIONAL HRSG BD Tank	2017	KOREA	1/2"~24"	CS STEEL STS STEEL	FLANGE, NOZZLE FLANGE, BOSS
42	FADHILI HRSG CBDIBD TANK	2017	KOREA	1/2"~24"	CS STEEL STS STEEL	FLANGE, NOZZLE FLANGE, BOSS



3. Business Reference

NO	PROJECT	YEAR	COUNTRY	SIZE RANGE	MATERIAL	PRODUCT
43	JEJU POWER PLANT CCPPSCR PROJECT	2017	KOREA	2-1/2"~24"	STS STEEL	FLANGE
44	JEJU POWER PLANT CCPPSCR PROJECT	2017	CHILE	8"~24"	STS STEEL	FLANGE
45	MHPS-NAVIO II / GT&LOCAL	2017	KOREA	1/2"~24"	CS STEEL STS STEEL	FLANGE, NOZZLE FLANGE, BOSS
46	MHPS-TURAKURGAN / GT&LOCAL	2017	KOREA	1/2"~24"	CS STEEL STS STEEL	FLANGE, NOZZLE FLANGE, BOSS
47	MHPS-TURAKURGAN / GT&LOCAL	2017	KOREA	1/2"~24"	CS STEEL STS STEEL	FLANGE, NOZZLE FLANGE, BOSS
48	MHPS - NAVOI-2 FUEL UNIT	2017	KOREA	1/2"~6"	CS STEEL STS STEEL	FLANGE, NOZZLE FLANGE, BOSS
49	JIJEL & BISKRA LARGE BORE	2017	KOREA	1/2"~24"	CS STEEL STS STEEL	FLANGE, NOZZLE FLANGE, BOSS
50	MHPS-TECHINT-HAMRAWAIN	2017	KOREA	1/2"~24"	CS STEEL STS STEEL	FLANGE, NOZZLE FLANGE, BOSS
51	FUJI-GEOTHERMAL POWER PLANT	2017	KOREA	1/2"~24"	CS STEEL STS STEEL	FLANGE, NOZZLE FLANGE, BOSS
52	POSCO E&C-SHINPYONGTACK Complex Power	2017	KOREA	1/2"~24"	CS STEEL STS STEEL	FLANGE, NOZZLE FLANGE, BOSS
53	HONG KONG LAMMAR PLANT & GT LOCAL	2017	KOREA	1/2"~24"	CS STEEL STS STEEL	FLANGE, NOZZLE FLANGE, BOSS



3. Business Reference

NO	PROJECT	YEAR	COUNTRY	SIZE RANGE	MATERIAL	PRODUCT
54	CJ MALAYSIA PROJECT	2016	MALAYSIA	1/2"~6"	CS STEEL STS STEEL	FLANGE, NOZZLE FLANGE, BOSS
55	KELAR PROJECT	2016	CHILE	1/2"~6"	CS STEEL STS STEEL	FLANGE, NOZZLE FLANGE, BOSS
56	DUYEN HAI3 EXT	2016	VIETNAM	1/2"~6"	CS STEEL STS STEEL	FLANGE, NOZZLE FLANGE, BOSS
57	SARULLA GEOTHERMAL POWER	2016	INDONESIA	1/2"~6"	CS STEEL STS STEEL	FLANGE, NOZZLE FLANGE, BOSS
58	Rabigh2 BFP	2016	SAUDI ARABIA	1/2"~6"	CS STEEL STS STEEL	FLANGE, NOZZLE FLANGE, BOSS
59	YONGNAM COMPLEX POWER PLATE	2017	KOREA	1"~40"	CS STEEL STS STEEL	FLANGE, NOZZLE FLANGE, BOSS
60	SAMSUNG HEAVY INDUSTRY (BV, DNV, ABS) PROJECT	2017	KOREA	1"~10"	STS STEEL	FLANGE, NOZZLE FLANGE, BOSS
61	POSCO	2017	KOREA	10"~20"	STS STEEL	FLANGE, NOZZLE FLANGE, BOSS
62	SAMSUNG HEAVY INDUSTRY BIO SYSTEM	2017	KOREA	15A~500A	CS STEEL STS STEEL	FLANGE, TUBE SHEET
63	DSME CILACAP DUCT PROJECT	2017	KOREA	1/2"~6"	CS STEEL STS STEEL	FLANGE, NOZZLE FLANGE, BOSS
64	IHI SFPSO / SPFSO2 PROJECT	2017	KOREA	1/2"~6"	CS STEEL STS STEEL	FLANGE, NOZZLE FLANGE, BOSS



3. Business Reference

NO	PROJECT	YEAR	COUNTRY	SIZE RANGE	MATERIAL	PRODUCT
65	Al Shabab Power Project Phase II Converting Existing Simple Cycle to Combined Cycle	2016	UAE	1/2"~6"	CS STEEL STS STEEL	FLANGE, NOZZLE FLANGE, BOSS
66	West Damietta Power Project Phase II Converting Existing Simple Cycle to Combined Cycle	2016	EGYPT	1/2"~6"	CS STEEL STS STEEL	FLANGE, NOZZLE FLANGE, BOSS
67	KWANGJU JUNNAM POWER PLANT BFP	2016	KOREA	1/2"~6"	CS STEEL STS STEEL	FLANGE, NOZZLE FLANGE, BOSS
68	YONGNAM COMPLEX POWER PLANT - CEP	2016	KOREA	1/2"~6"	CS STEEL STS STEEL	FLANGE, NOZZLE FLANGE, BOSS
69	S-OIL SUPER PROJECT PKG.2 (PKG:API)	2016	KOREA	1/2"~6"	CS STEEL STS STEEL	FLANGE, NOZZLE FLANGE, BOSS
70	SHUQAIQ SPP CWP Booster pump	2016	SAUDI ARABIA	1/2"~6"	CS STEEL STS STEEL	FLANGE, NOZZLE FLANGE, BOSS
71	Rabigh IPP 2X660MW PJT	2016	SAUDI ARABIA	1/2"~6"	CS STEEL STS STEEL	FLANGE, NOZZLE FLANGE, BOSS
72	KPIC ONE PROJECT (API-2 pkg)	2016	KOREA	1/2"~6"	CS STEEL STS STEEL	FLANGE, NOZZLE FLANGE, BOSS
73	RAIPUR PROJECT	2016	KOREA	1/2"~6"	CS STEEL STS STEEL	FLANGE, NOZZLE FLANGE, BOSS
74	SHINYEOLSUNG 1,2	2016	KOREA	1/2"~6"	CS STEEL STS STEEL	FLANGE, NOZZLE FLANGE, BOSS
75	GDNK-QATAR UHP PJT	2016	QATAR	1/2"~6"	CS STEEL STS STEEL	FLANGE, NOZZLE FLANGE, BOSS



3. Business Reference

NO	PROJECT	YEAR	COUNTRY	SIZE RANGE	MATERIAL	PRODUCT
76	SAFI IPP PROJECT-CEP	2016	MOROCCO	1/2"~6"	CS STEEL STS STEEL	FLANGE, NOZZLE FLANGE, BOSS
77	Kirikkale IPP CWP	2016	TURKEY	1/2"~6"	CS STEEL STS STEEL	FLANGE, NOZZLE FLANGE, BOSS
78	GS KNPC CFP VS6	2016	KUWAIT	1/2"~6"	CS STEEL STS STEEL	FLANGE, NOZZLE FLANGE, BOSS
79	KARBALA REFINERY PROJECT	2016	IRAQ	1/2"~6"	CS STEEL STS STEEL	FLANGE, NOZZLE FLANGE, BOSS
80	LORDEGAN Fertilizer Plant / HP Ammonia & Carbamate pump PKG	2016	IRAQ	1/2"~6"	CS STEEL STS STEEL	FLANGE, NOZZLE FLANGE, BOSS
81	SUCKMOON GROUP ENERGY (GSP)	2016	KOREA	1/2"~6"	CS STEEL STS STEEL	FLANGE, NOZZLE FLANGE, BOSS
82	CHOONCHUN GROUP ENERGY	2016	KOREA	1/2"~6"	CS STEEL STS STEEL	FLANGE, NOZZLE FLANGE, BOSS
83	SHINGORY #5,6 NSSS GSP&BACP	2016	KOREA	1/2"~6"	CS STEEL STS STEEL	FLANGE, NOZZLE FLANGE, BOSS
84	YOUNGNAM COMPLEX POWER PLANT - BFP	2016	KOREA	1/2"~6"	CS STEEL STS STEEL	FLANGE, NOZZLE FLANGE, BOSS
85	DONGDOOCHUN COMPLEX POWER PLANT BFP Bare Pump	2016	KOREA	1/2"~6"	CS STEEL STS STEEL	FLANGE, NOZZLE FLANGE, BOSS
86	Kermanshah Urea & Ammonia PJT (2 nd Phasd)	2016	IRAN	1/2"~6"	CS STEEL STS STEEL	FLANGE, NOZZLE FLANGE, BOSS



3. Business Reference

NO	PROJECT	YEAR	COUNTRY	SIZE RANGE	MATERIAL	PRODUCT
87	DSME JIJEL HRSG BD Tank	2016	KOREA	2"~24"	CS STEEL	FLANGE
88	SUMSUNG HEAVY INDUSTRY, DSME (LR, DNV, ABS, BV) PROJECT	2016	KOREA	1/2"~2"	CS STEEL STS STEEL	FLANGE, BOSS
89	SARULLA PROJECT	2016	INDONESIA	1/2"~48"	CS STEEL STS STEEL	FLANGE, NOZZLE FLANGE, TUBE SHEET
90	OMART PROJECT	2016	ISRAEL	1/2"~8"	CS STEEL STS STEEL	FLANGE
91	POSCO / CHOONCHUN PROJECT	2016	KOREA	3"~36"	CS STEEL STS STEEL	FLANGE
92	EXXONMOBIL ASIA PACIFIC / SHU2 PROJECT	2016	KOREA	1/2"~24"	CS STEEL STS STEEL	FLANGE
93	PETRONAS / Technip-S1 PROJECT	2016	MALAYSIA	1/2"~24"	CS STEEL STS STEEL	FLANGE
94	DAEJOO MACHINERY PROJECT	2016	KOREA	4"~36"	CS STEEL STS STEEL	FLANGE
95	LANXESS / TSR CAPEX PROJECT	2016	KOREA	1/2"~24"	CS STEEL STS STEEL	FLANGE
96	GS / KARBALA PROJECT	2016	IRAQ	1/2"~24"	CS STEEL STS STEEL	FLANGE



4. Certificate (ISO 9001:2015)

ABS Quality Evaluations
Certificate Of Conformance


This is to certify that the Quality Management System of:
KFP CO., LTD.
84, Hwajeonsandan 2-ro, Gangseo-gu
Busan
Korea




has been assessed by ABS Quality Evaluations, Inc. and found to be in conformance with the requirements set forth by:
ISO 9001:2015

The Quality Management System is applicable to:

MANUFACTURE OF FITTINGS AND FLANGES

This certificate may be found on the ABS QE Website (www.abs-qe.com). For certificates issued in the People's Republic of China information may also be verified on the CNCA website (www.cnca.gov.cn).

Certificate No:	60690	 Dominic Townsend, President
Effective Date:	15 January 2020	
Expiration Date:	14 January 2023	
Revision Date:	15 January 2020	

Validity of this certificate is based on the successful completion of the periodic surveillance audits of the management system defined by the above scope and is contingent upon prompt, written notification to ABS Quality Evaluations, Inc. of significant changes to the management system or components thereof.

ABS Quality Evaluations, Inc. 1701 City Plaza Drive, Spring, TX 77389, U.S.A.
Validity of this certificate may be confirmed at www.abs-qe.com/cert_validation.

Copyright 2011-2020 ABS Quality Evaluations, Inc. All rights reserved.



4. Certificate (PED 2014/68/EU)

ABS Group

CERTIFICATE OF CONFORMANCE

FOR METALLIC MATERIAL MANUFACTURER

This is to certify that the Quality Management System of:

KFP CO., LTD.

**84, Hwajeonsandan 2-ro, Gangseo-gu
Busan
Korea**

has been assessed by ABS Group and found to comply with the requirements of ISO 9001:2015 and the provisions of the Pressure Equipment Directive (PED) 2014/68/EU, Annex I, Paragraph 4.3.

Scope of supply:
Manufacture of Fittings and Flanges

The manufacturer is authorized to issue certificates of specific and non-specific product control required by the Pressure Equipment Directive and the material specifications applied.

Certificate number:
60691

The certificate is valid until the expiry date shown below, subject to continued certification of the ISO 9001:2015 system and satisfactory annual PED material manufacturer audits.

Issue Date: 15 January 2020
Expiration Date: 14 January 2023



Nathalie Stavratou, Regional Technical Manager

Registered office:
ABS Services Ltd, 34 Orense Street, Floor 10 28020 Madrid Spain

ABS Group Ltd.
London, UK

CERTIFICATE OF CONFORMANCE

Annex to the certificate of quality system approval

Certificate number:
60691
KFP CO., LTD.

Designation of Material	Reference: Standard, code	Manufacturing Site
Forged Flanges, Tube sheets, Fittings(Forged) and Nozzles, etc.	ASME SA105/ASTM A105	KFP Co., Ltd. In Busan
Forged Flanges, Tube sheets and Nozzles, etc.	ASME SA266/ASTM A266 Gr.1~Gr.4	KFP Co., Ltd. In Busan
Forged Flanges, Tube sheets Fittings(Forged) and Nozzles, etc.	ASME SA350/ASTM A350 LF1, LF2, LF3, LF5, LF6, LF9, LF787	KFP Co., Ltd. In Busan
Forged Flanges, Tube sheets and Nozzles, etc.	ASTM A694 F42, F46, F48, F50, F52, F56, F60, F65, F70	KFP Co., Ltd. In Busan
Forged Flanges, Tube sheets, Fittings(Forged) and Nozzles, etc.	ASME SA182 / ASTM A182 F1, F5, F9, F91, F92, F11, F12, F22, F22V, F304, F304L, F304H, F304N, F304LN, F316, F316L, F316H, F316N, F316LN, F317, F317L, F321, F321H, F347, F347H, F44, F51, F53, F55, F60	KFP Co., Ltd. In Busan
Forged Flanges, Tube sheets and Nozzles, etc.	ASME SB564 / ASTM B564 UNS N06625, N08825, N04400	KFP Co., Ltd. In Busan
Fittings (Elbow, Tee, Reducer and Cap, etc.)	ASME SA234/ ASTM A234 WPB, WP1, WP11, WP22, WPS, WP9, WP91, WP92	KFP Co., Ltd. In Busan
Fittings (Elbow, Tee, Reducer and Cap, etc.)	ASME SA403 / ASTM A403 WP304, WP304L, WP316, WP316L, WP321, WP321H, WP347, WP347H	KFP Co., Ltd. In Busan
Fittings (Elbow, Tee, Reducer and Cap, etc.)	ASME SA420/ ASTM A420 WPL6, WPL9, WPL3, WPL8	KFP Co., Ltd. In Busan
Fittings (Elbow, Tee, Reducer and Cap, etc.)	ASME SA815/ ASTM A815 UNS S31803, S32750, S32760	KFP Co., Ltd. In Busan
Fittings (Elbow, Tee, Reducer and Cap, etc.)	ASTM A860 WPHY42, WPHY46, WPHY52, WPHY60, WPHY65, WPHY70	KFP Co., Ltd. In Busan
Fittings (Elbow, Tee, Reducer and Cap, etc.)	ASME SB366/ ASTM B366 UNS N04400, N06625, N08825	KFP Co., Ltd. In Busan

Registered office:
ABS Group LTD, ABS House |1 Frying Pan Alley | London E1 7HR | United Kingdom

5. Product Categories



Lap-Joint



Slip-On



Threaded



Socket Weld

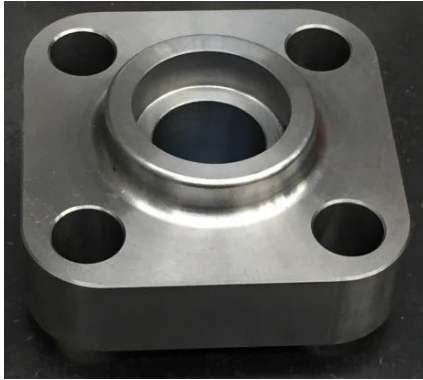


Welding Neck



Blind

5. Product Categories



Square



Long Welding Neck



Orifice



Tube Sheet

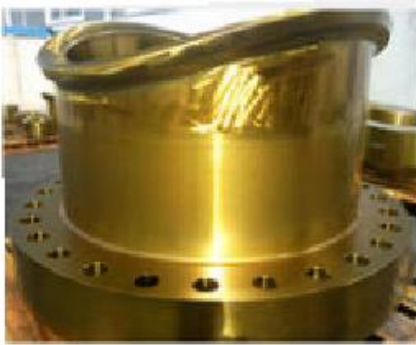


Channel Flange



Channel Cover

5. Product Categories



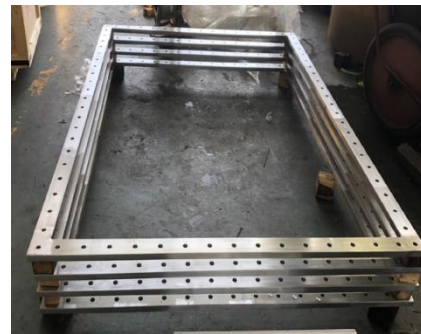
Nozzle Flange



Forged Reducer



Foreged Pipe
(Heavy wall)



Scrubber Square
Flange



6. Facilities

No	Equipment	Standard	Qty	Applicable Products
1	CNC TURNING MACHINE	Outer Diameter – 2,500mm Height - 1,500mm	3	FLANGE TUBE SHEET NOZZLE
2	NC TURNING MACHINE	Outer Diameter – 2,500mm Height – 1,500mm	2	FLANGE TUBE SHEET NOZZLE
3	DRILL MASTER	Outer Diameter – 2,500mm Height – 1,500mm	2	FLANGE BOLT HOLE
4	RADIAL DRILL	Outer Diameter – 2,500mm Height – 1,500mm	1	FLANGE BOLT HOLE
5	CNC MILLING MACHINE	Outer Diameter – 2,000mm Height – 1,500mm	2	FLANGE TUBE SHEET NOZZLE

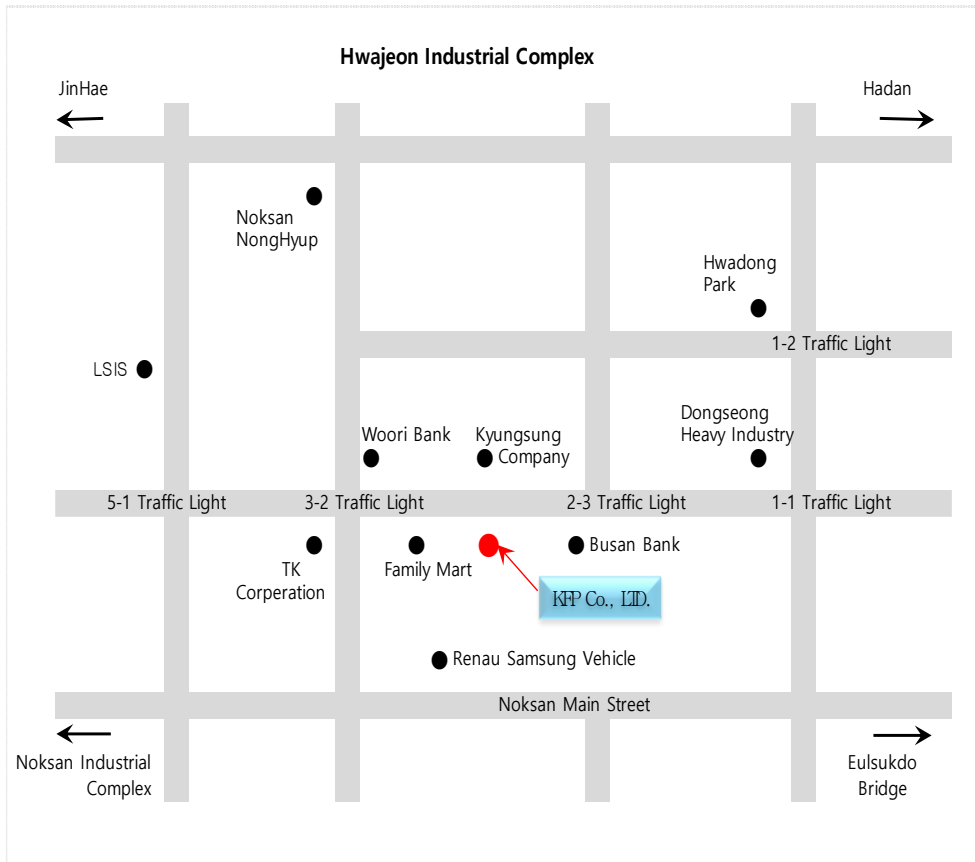


6. Facilities

No	Equipment	Standard	Qty	Applicable Products
6	LATHE MACHINE	Outer Diameter – 2,500mm Height – 6,000mm	1	FORGED SHEEL & SHAFT
7	LATHE MACHINE	Outer Diameter – 1,500mm Height – 6,000mm	1	FORGED SHEEL & SHAFT



Location



Headquarters and Factory

84, Hwajeonsandan 2-ro, Gangser-gu, Busan, Korea

TEL : +82 51 970 9950

FAX : +82 51 971 9951

E-mail : kfp@kfp.kr